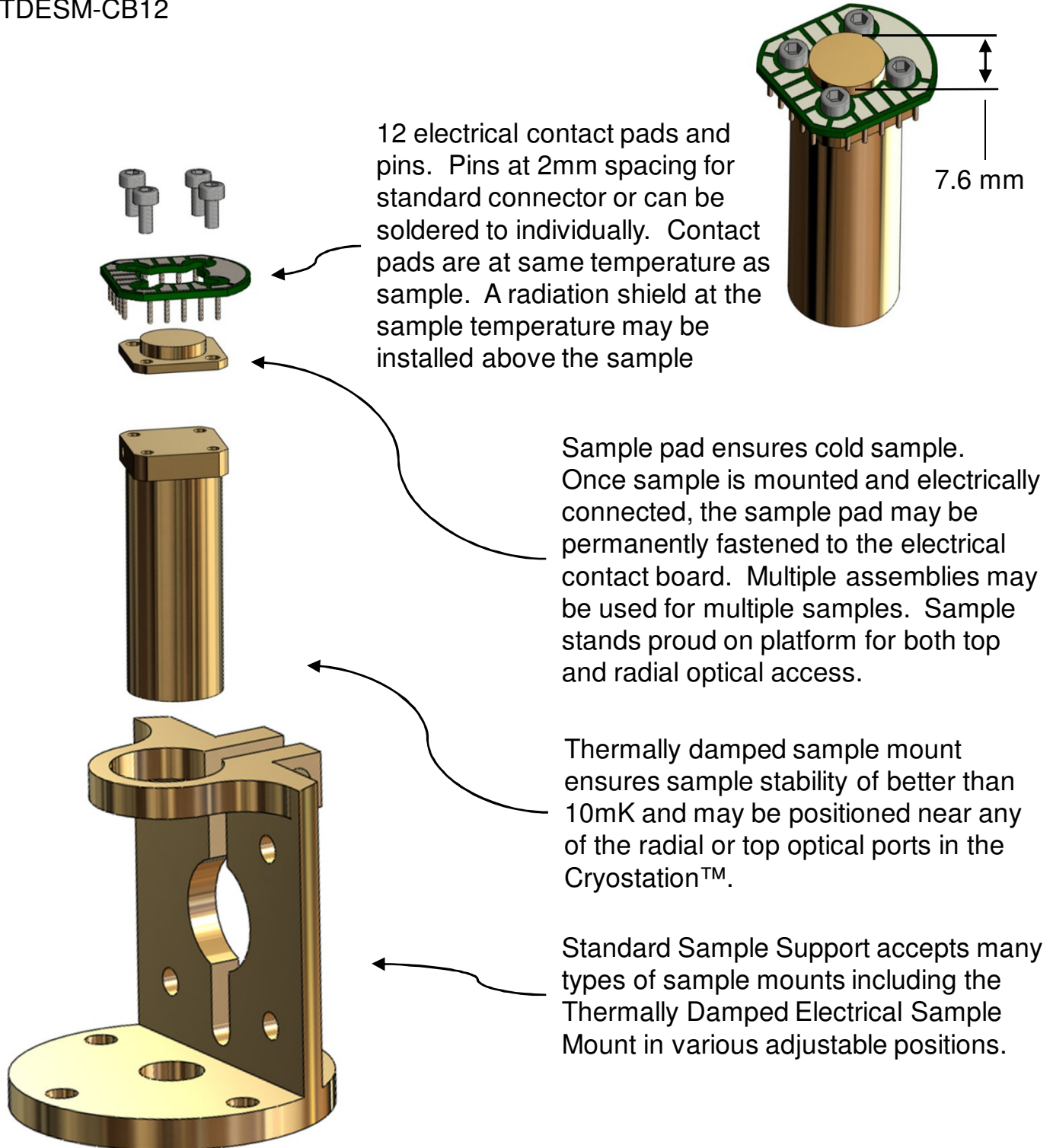


Thermally Damped Electrical Sample Mount	Doc-103
--	---------

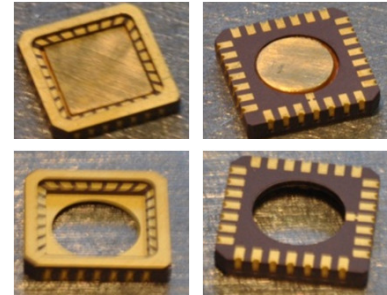
TDESM-CB12



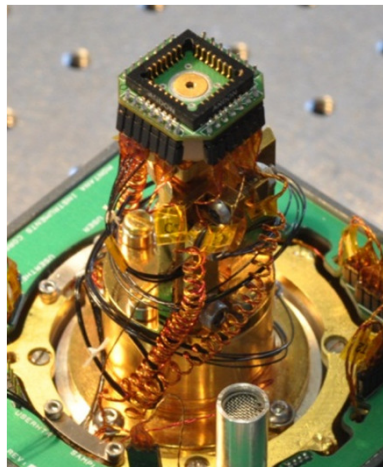
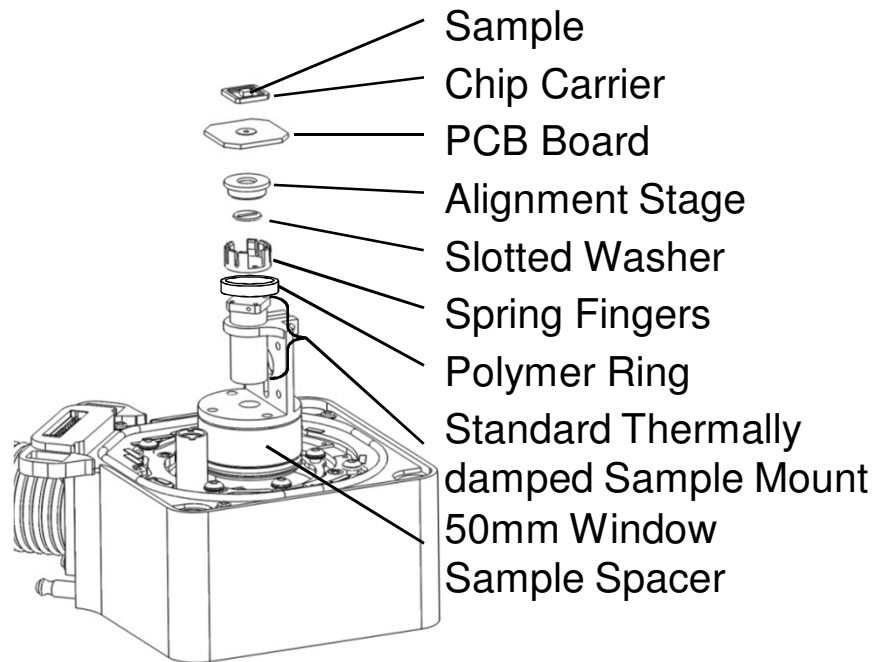
Dimensions and features are subject to change without notice.

TDESM-LCC28

The LCC sample mounting allows users to mount their samples in leadless chip carriers (LCC) which are specially modified to effectively couple the temperatures to the sample.



The sample “chip” is then inserted into a socket on the cryogenic platform, which allows excellent electrical and thermal connection to the chip and sample.



Connections are made to the chip socket using wire assemblies. This assembly includes both DC and RF (coax) signals to the sample on the chip.