

## Performance Data

### TDESM-LCC28

Data taken with user thermometer mounted to custom cored LCC chip.

With 24 DC wires and 4 RF leads to socket.

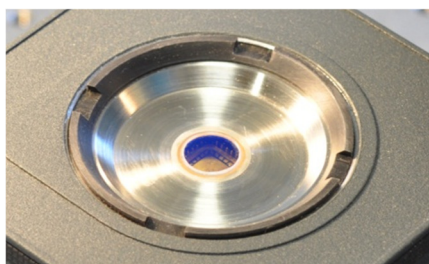
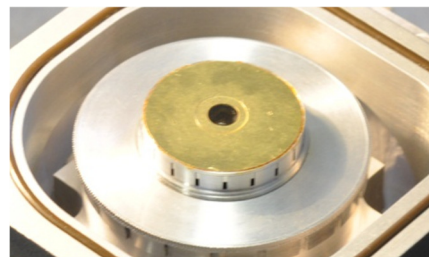
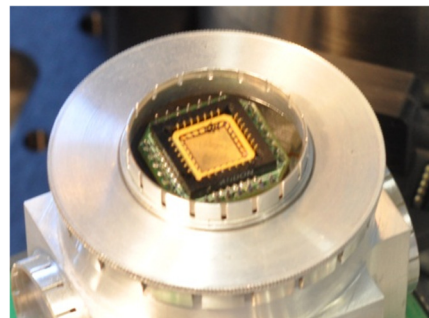
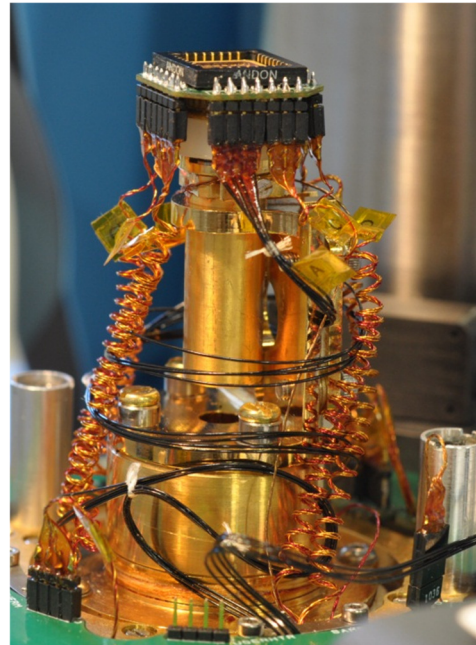
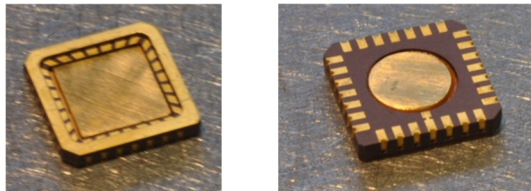
External window 0.5mm thick

Internal window standard fused silica 30mm x 3mm.

Temp at LCC chip: 3.87K

Temp at Platform: 3.4K

Top and bottom views of special LCC chip:



### TDESM-LCC28 with low working distance option

Uses above setup with brass window holder with 0.2mm thick BK7 window. Working distance less than 1mm.

Temp at LCC chip: 4.21K

Temp at Platform: 3.4K

### Standard system performance without tower

Used 0.5mm thick external window and standard sample mount

Temp at Sample: 2.97K

Temp at Platform: 2.90K